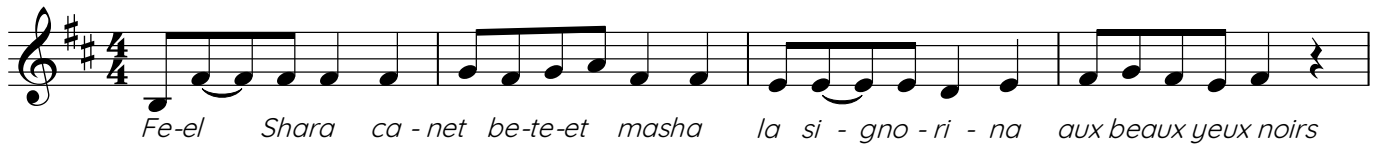
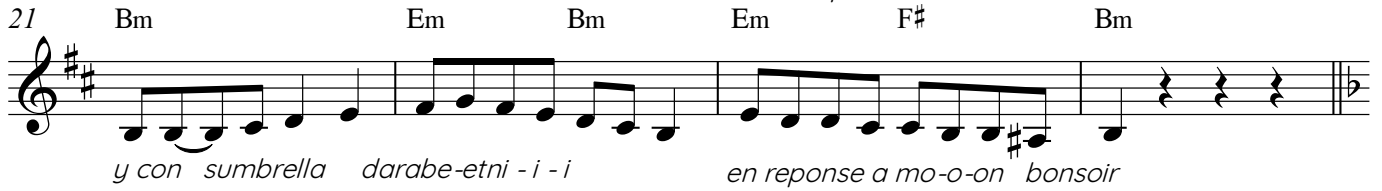
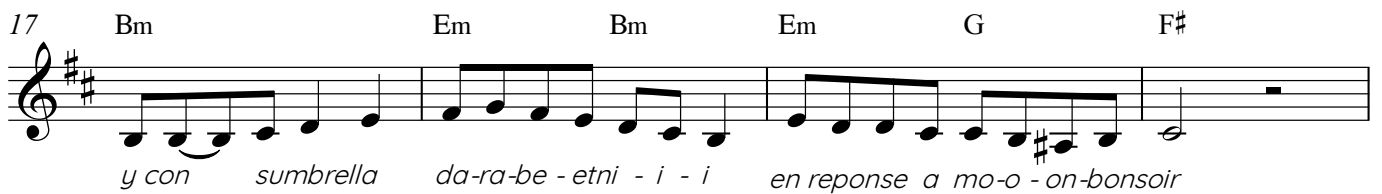
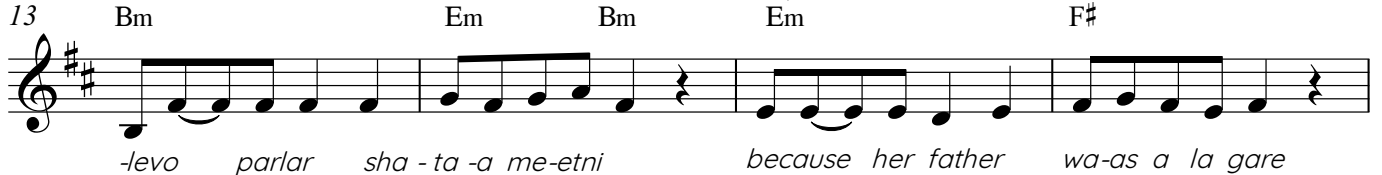
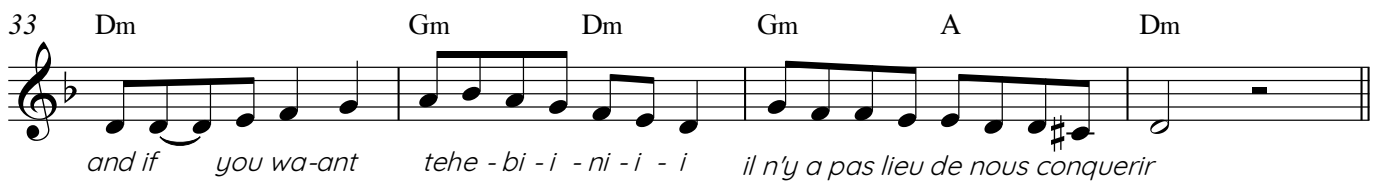
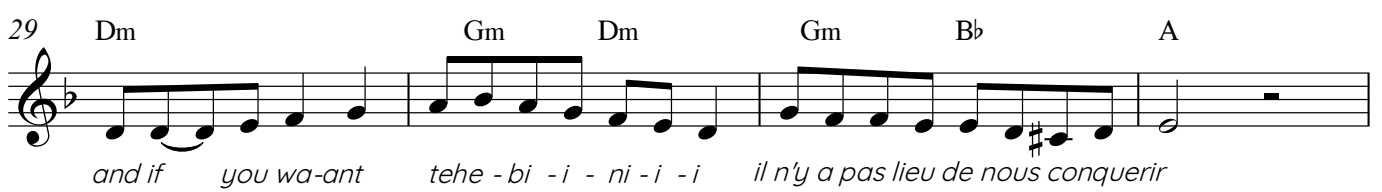
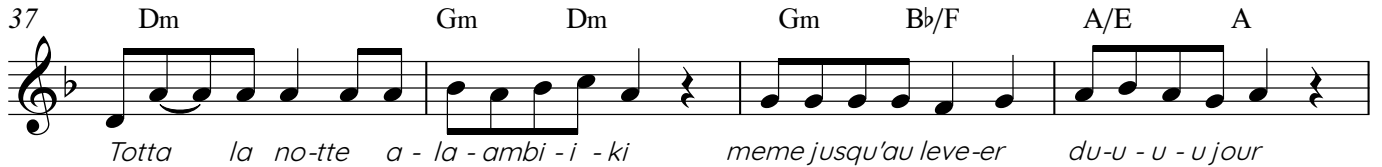


## Felshara

trad.

♩=120

**A1****B****B1**

Voice

2

2

41 Dm Gm Dm Gm Bb A

*and eve - ry morning ash-ta - a - an-a - ki - i - i pour le voue de no- otre amour...*

45 Dm Gm Dm Gm Bb A

*and eve - ry morning ash-ta - a - an-a - ki - i - i pour le voue de no- otre amour...*